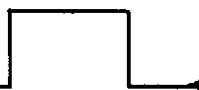


McIntosh



MC-2505 SOLID STATE AMPLIFIER

Page -1-

Although the MC2505 is rated at 50 watts (sine wave) per channel, it will normally put out at least 75 watts per channel. However, it is possible to drive the amplifier even harder than this. The following modification will improve the power output capabilities when the amplifier is loaded with a mis-matched load. It will also eliminate the possibility of any noise from the power supply being heard through the speakers when the amplifier is turned on and off.

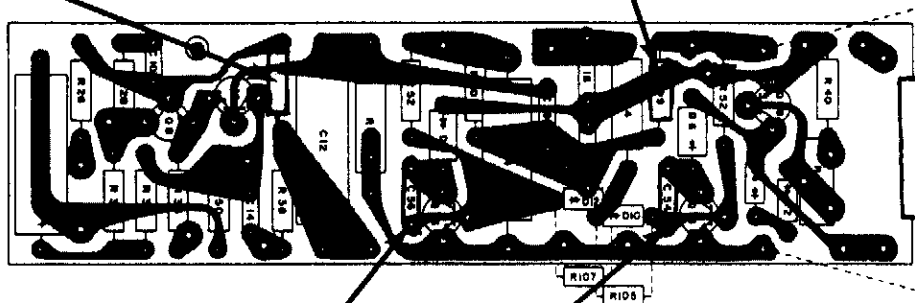
This modification pertains to amplifiers bearing serial numbers 10K01 through 11K54. Amplifiers having a higher serial number than 11K55 have been modified.

It is necessary to change 2 resistors and 2 capacitors on each power output printed circuit board. A resistor is added to the board. In addition, 1 resistor is changed in the power supply and a diode and capacitor are added.

Add a 3.3K resistor

Change R-99 from 220 ohms
to 130 ohms

Change R-62 from
.56 ohms to .33 ohms



Change C-56 and C-54
from .01 mfd to .047 mfd

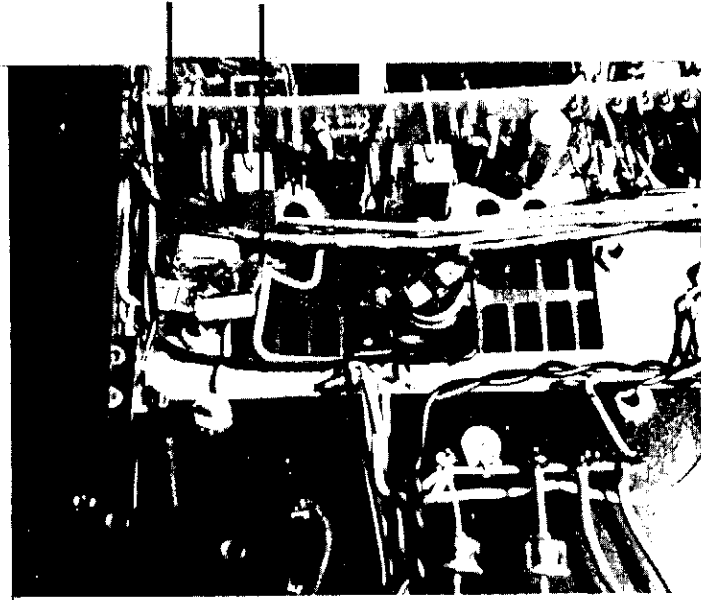
The right channel power output printed circuit board is shown. Do likewise on the left channel board.

Add a .22mfd, 250 volt capacitor from the -40 volt supply to ground as shown below:

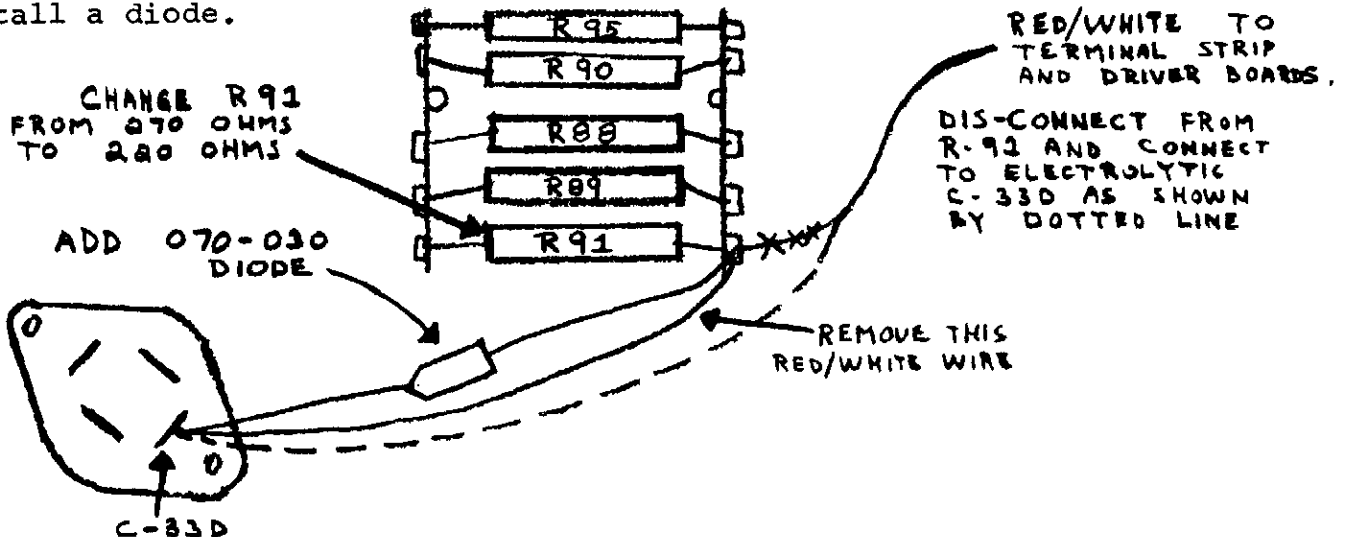
McIntosh

Page -2-

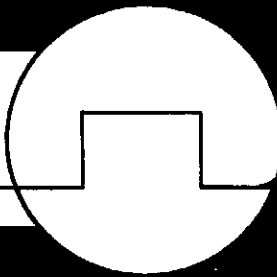
Connect the Capacitor Here



There are two terminal strips mounted on the chassis between the large electrolytic filter capacitors. There are four 2 watt resistors and 1 5 watt resistor soldered to these terminal strips. There is a red/white wire connected to one side of a terminal strip at R91. R91 is now a 270 ohm, 2 watt resistor. Change this resistor to a 220 ohm, 2 watt resistor. Remove the red/white wire that is connected here. Connect it to C-33D as shown in the picture. Also, from C-33D and the junction where the wire was formerly connected, install a diode.



McIntosh



Page -3-

After the modification is made, no adjustments are necessary.

Parts required:

2 - .33 ohm, 5W resistors	McIntosh part #139-036
2 - 130 ohm, 1/2W resistors	McIntosh part #136-073
2 - 3.3K ohm, 1/2W resistors	McIntosh part #136-131
1 - 220 ohm, 2W resistor	McIntosh part #139-042
4 - .047mfd, 250 volt capacitors	McIntosh part #064-044
1 - .22mfd, 250 volt capacitor	McIntosh part #064-043
1 - Diode	McIntosh part #070-030

When ordering these parts, ask for McIntosh parts kit number 9043-664.

The following schematics show the changes:

